

International Symposium on Radiometric Dating Studies

-Frontier of Technical Developments and Applications of CHIME and AMS ¹⁴C Dating Methods-

Date: 15-17 January, 2007

Venue: Symposion Hall, Nagoya University

Purpose:

Both CHIME U-Th-Pb and AMS ¹⁴C dating methods have been intensively investigated for more than 25 years at Nagoya University, and the technical studies as well as applications of the methods have been accelerated since the establishment of our research facility, the Center for Chronological Research (CCR), since 2000. At present, both dating methods are inevitable for chronological researches on the history of earth environments and human developments. This symposium aims to summarize the present status of both dating methods and to survey prospective frontiers of both technical and application developments.

Tentative program:

Jan. 15 Opening at 09:30

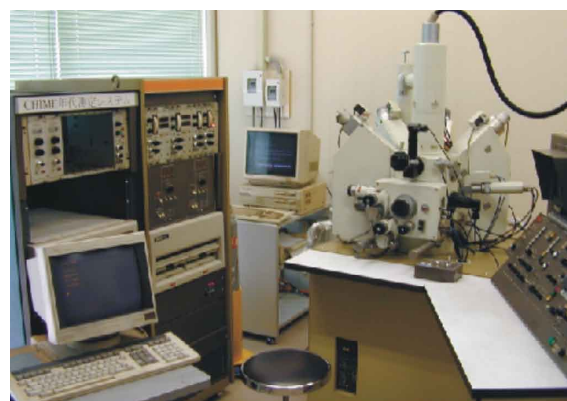
10:00 to 17:20 Session 1: CHIME dating studies

17:30 to 18:30 Poster Session

Jan. 16 09:30 to 18:30 Session 2: AMS ¹⁴C dating studies

18:30 to 20:30 Symposium Reception

Jan. 17 09:30 to 17:40 Session 3 : The 19th symposium on chronological studies at the Nagoya University CCR in 2006 (in Japanese)



CHIME

Speakers:

CHIME dating:

ITAYA, T. (Okayama University of Science, Japan)

SANTOSH, M.W. (Kochi University, Japan)

KIM, K.H. (Ewha Women's University, Korea, RO)

SUZUKI, K. (Nagoya University, Japan) etc.

AMS dating:

KIESER, W.E. (University of Toronto, Canada)

JULL, A.J.T. (Univeristy of Arizona, USA)

KRETSCHMER, W. (University of Erlangen, Germany)

NAKAMURA, T. (Nagoya University, Japan) etc.



Accelerator Mass Spectrometer

